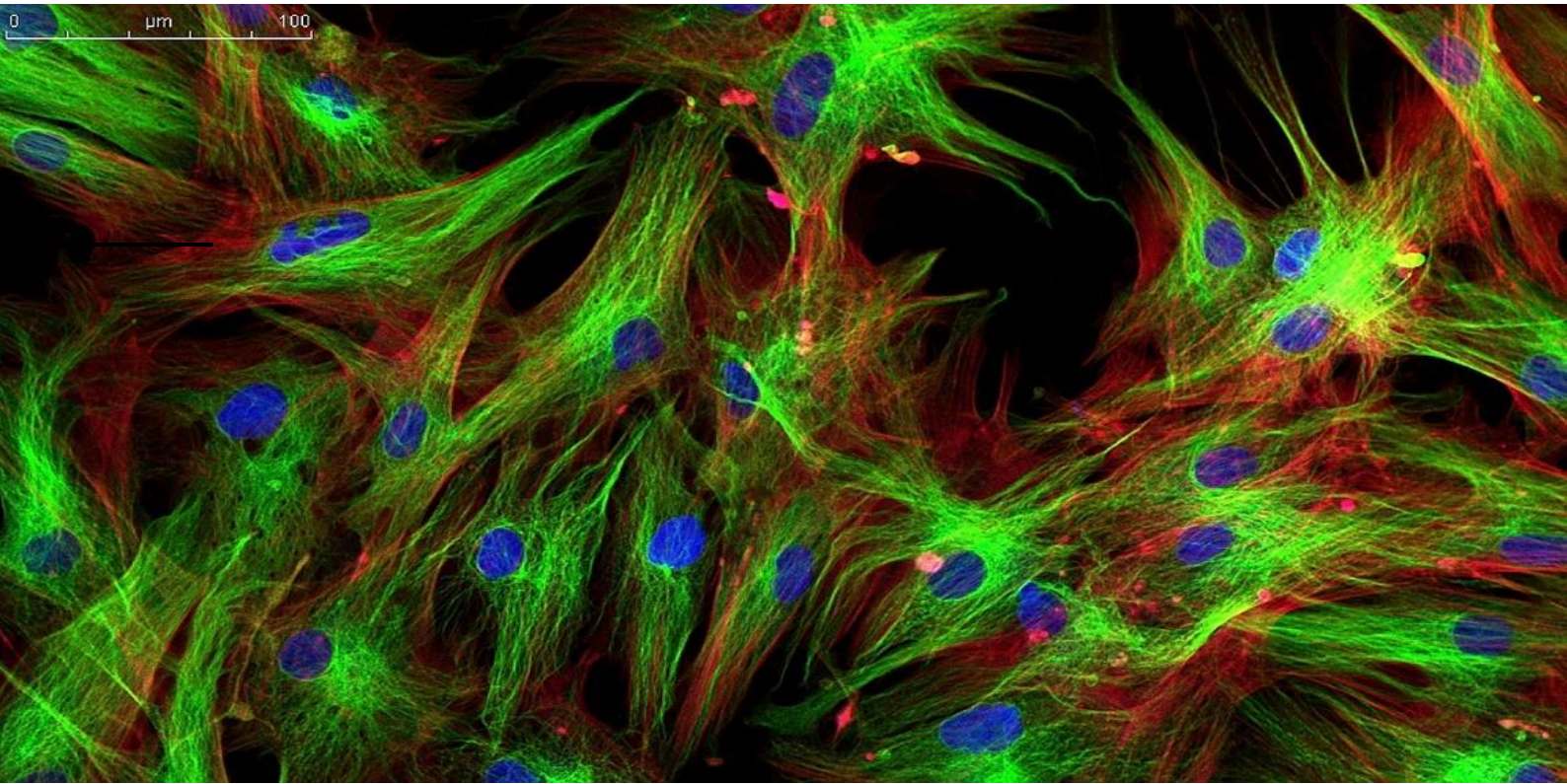


# FLOURESCENCE MICROSCOPE



SLV-22FL



Super Wide Field SWF10x/22mm  
Eyepiece Dia.30mm Diopter Adjustable



Large Size Head With Eyepiece Tube And Eyepiece Dia.30mm



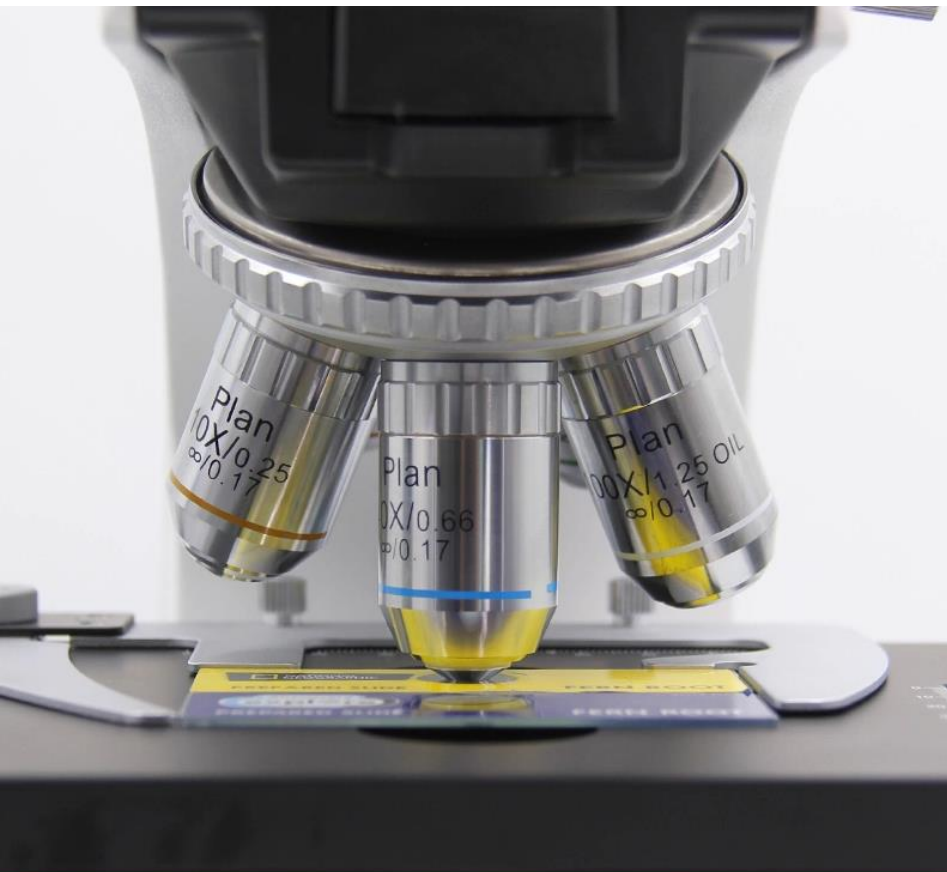
Fixed E80:P20 (Optional)



E100:P0/E0:P100

**Trinocular Head Light Split Optional Between Switch E100:P0/E0:P100 & Fixed E80:P20**

In Fixed Light Split, Eyepiece 80%: Photo 20% User Can View Image at Same Time In Both Path  
In Switch Light Split, Eyepiece 100%: Photo 0% / Eyepiece 0%: Photo 100%, Camera Can Have 100% Light For Photo Capture.



**Large Size High Precision  
Quintuple Nosepiece, With  
Polarizing Analyzer Slot,**

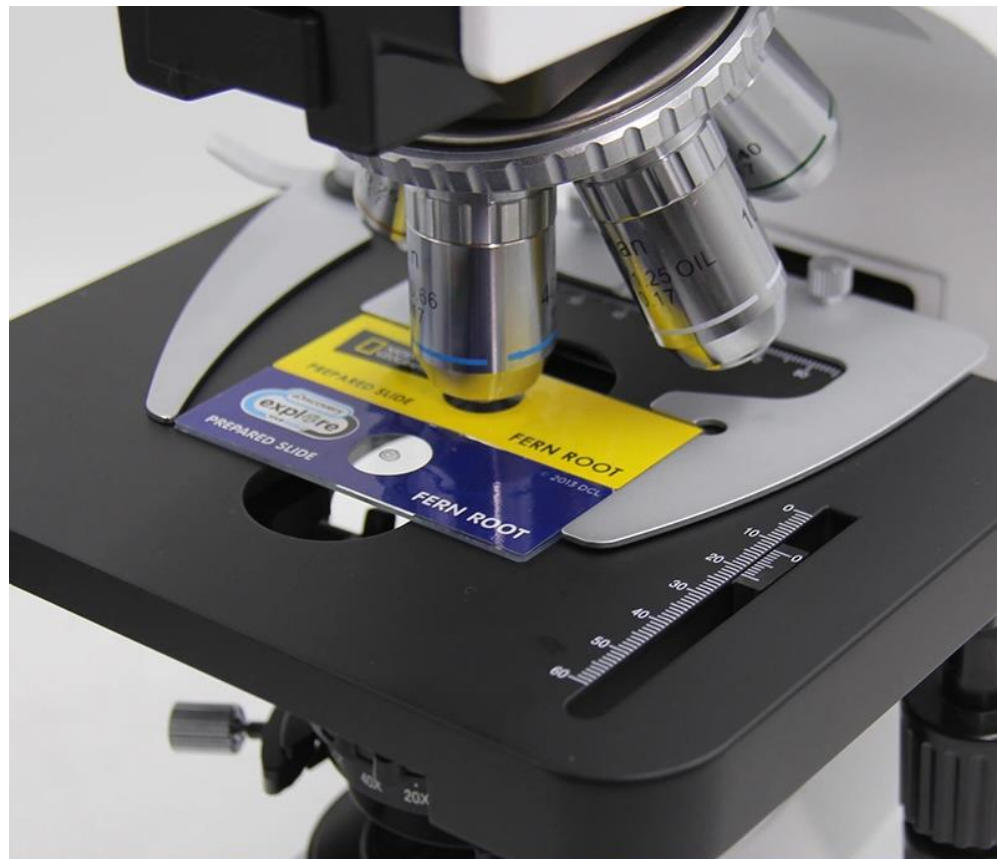
Infinity Plan Objective 4x,10x,20x,40x,100x  
Available

Creative 100X Water Objective (Optional)  
Instead Of 100X Oil Objective, More  
Convenient for Using & Cleaning After Use

Infinity Plan Objective 4x,10x,20x,40x,100x Available

**Rack less (Integrated)  
Mechanical Stage**

Large Size 182x140mm, Double Slide  
Holder  
Travel Range 77x52mm



Rackless (Integrated) Mechanical Stage,  
Large Size 182 × 140mm, Double Slide Holder



**Swing-out Condenser,  
N.A.0.9/0.13,Iris Diaphragm**  
Control The Amount Of Light According To  
Demand, The Effect Is More Perfect.

Swing-out Condenser,N.A.0.9/0.13,Iris Diaphragm



6 Holes Disk Fluorescence Unit

## 6 Holes Disk Fluorescence Unit

Can Load Up to 5 Fluorescence Filters + 1 Hole for Bright Field View,



### 5W LED Lamp Fluorescent

Illumination Unit, With Field Diaphragm, Light Switch Lever.

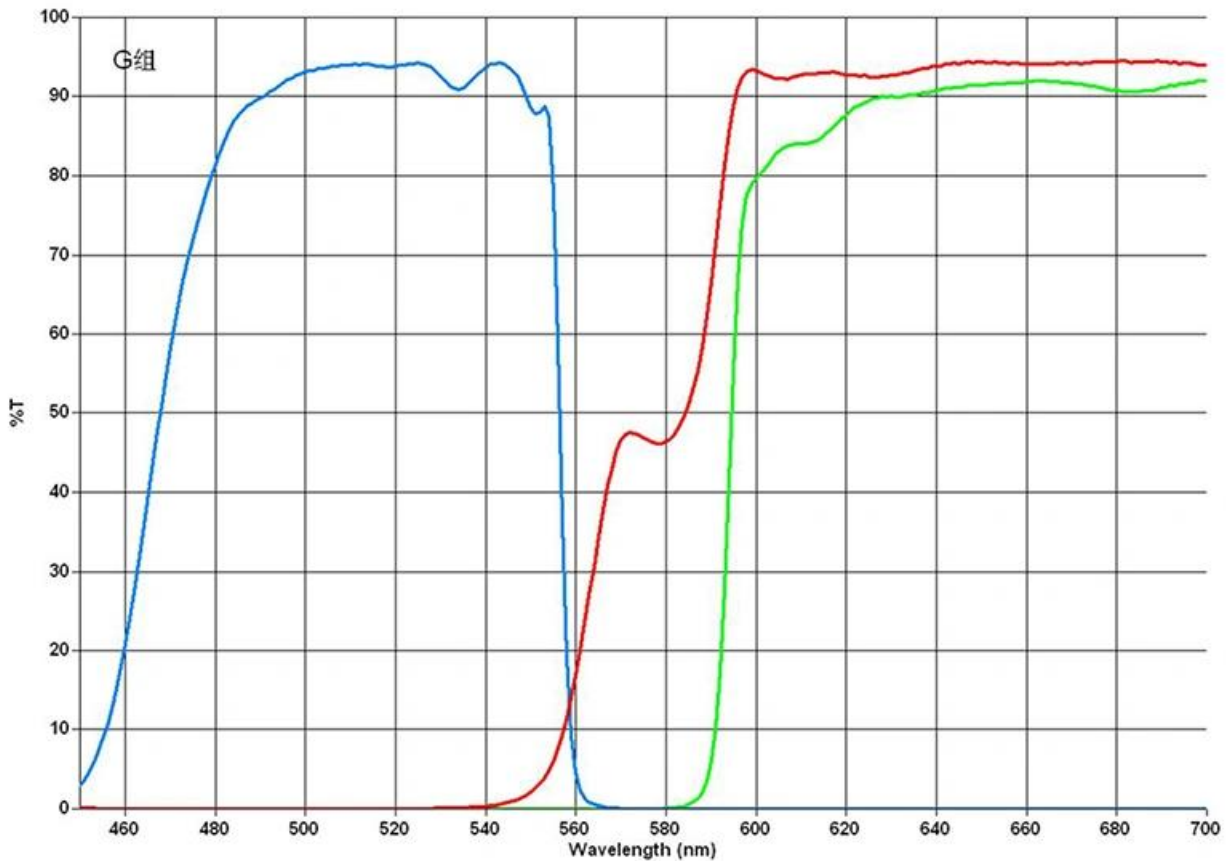
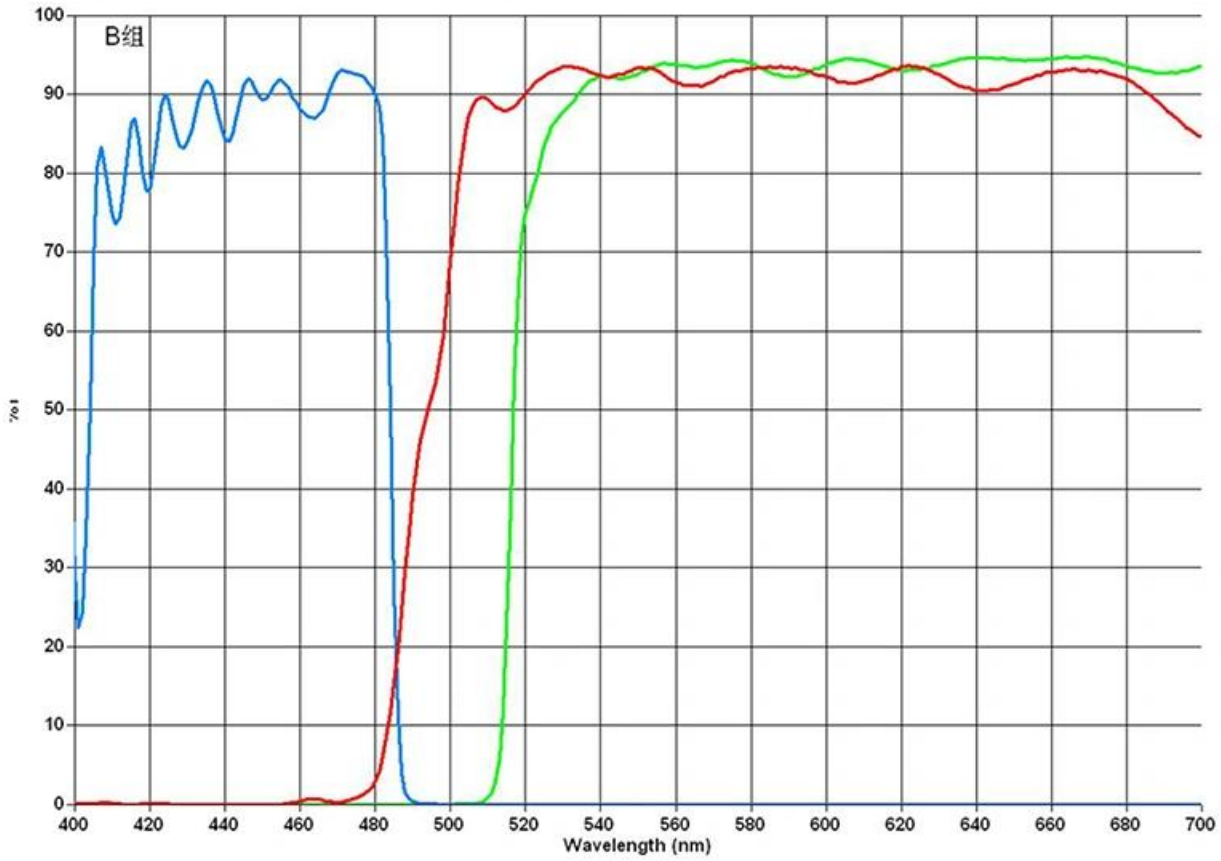
### TECHNICAL SPECIFICATION

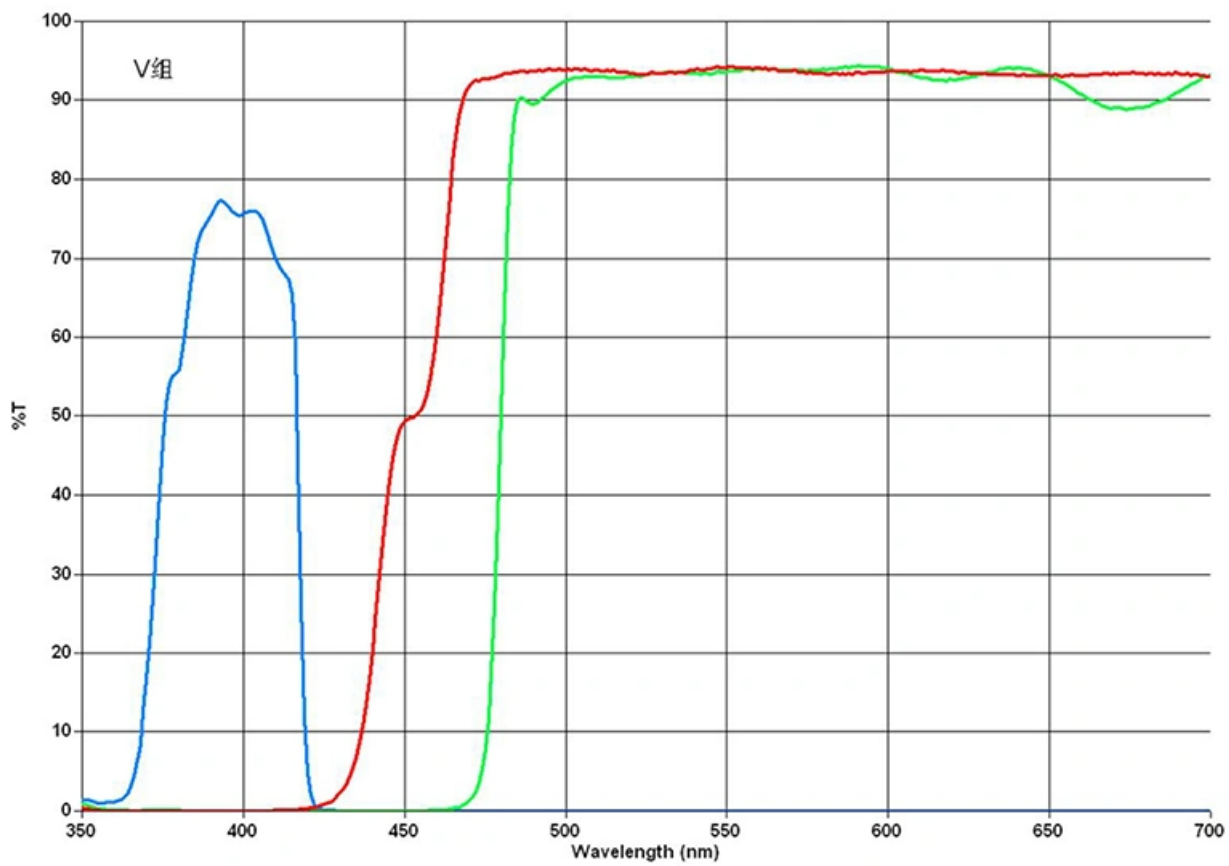
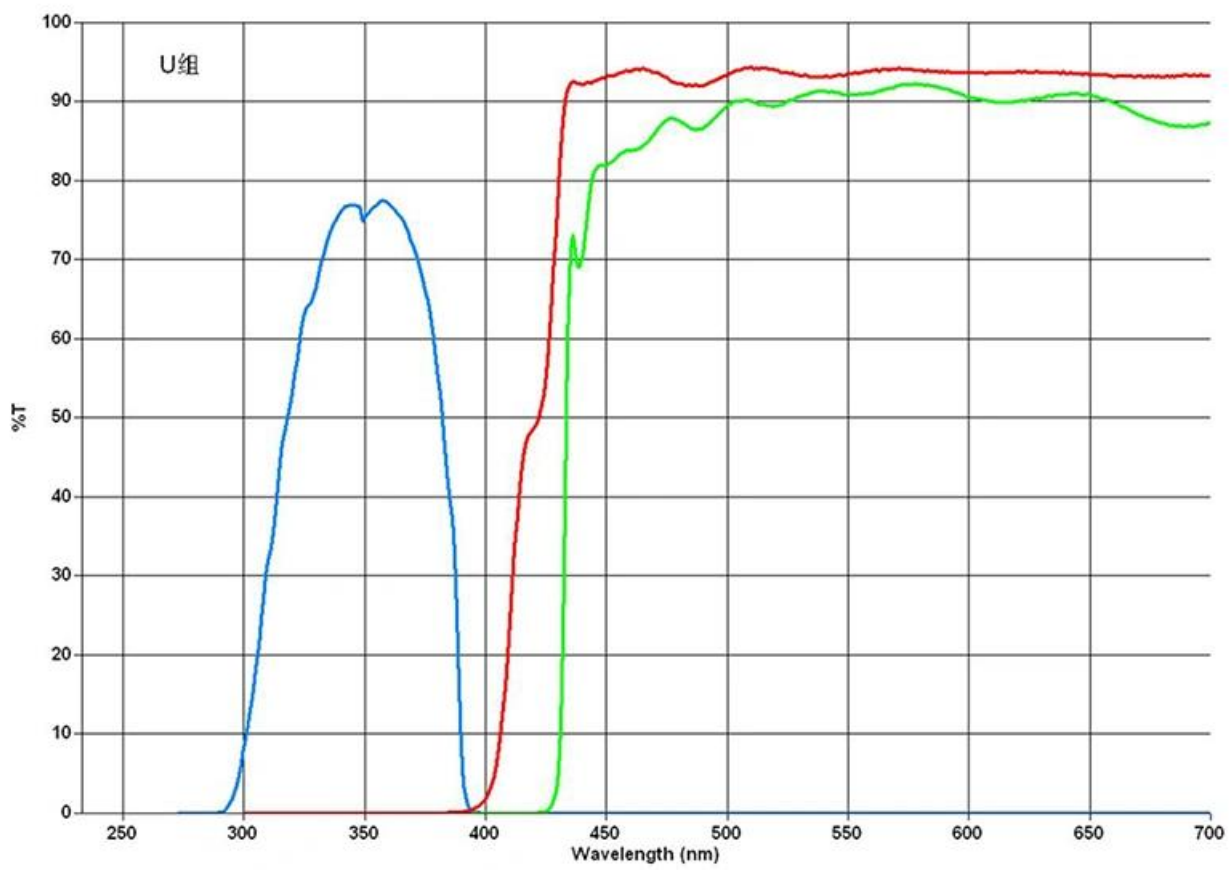
Items	SLV-22FL Fluorescent Microscope Specification	B2	T2	B4	T4
Head	Siedentopf Binocular Head Inclined 30°, Rotatable 360°, Interpupillary Distance 48-76mm, <b>Eyepiece Tube Dia.30mm</b>	●	○	●	○
	Seidentopf Trinocular Head Inclined 30°, Rotatable 360°, Interpupillary Distance 48-76mm, Light Split Switch E100:P0/E20:P80, <b>Eyepiece Tube Dia.30mm</b>	○	●	○	●
Eyepiece	WF10x/22mm, <b>Dia.30mm</b> , High Eyepoint, Diopter Adjustable	●●	●●	●●	●●
Nosepiece	Quintuple	●	●	●	●
Infinity Plan Objective	PLAN 2.5X/0.07, W.D.=8.47mm	○	○	○	○
	PLAN 4X/0.10, W.D.=12.10mm	●	●	●	●
	PLAN 10X/0.25, W.D.=4.64mm	●	●	●	●
	PLAN 20X/0.40(S), W.D.=2.41mm	●	●	●	●
	PLAN 40X/0.66(S), W.D.=0.65mm	●	●	●	●
	PLAN 60X/0.80(S), W.D.=0.33mm	○	○	○	○
	PLAN 100X/1.25(S, Oil), W.D.=0.12mm	●	●	●	●
PLAN 100X/1.15(S, Water), W.D.=0.19mm	○	○	○	○	
Infinity Plan	U PLAN FLN 4x, N.A.0.16, W.D.=17.151mm	○	○	○	○

Semi-APO Fluorescent Objective	U PLAN FLN 10x, N.A.0.30, W.D.=7.68mm	○	○	○	○
	U PLAN FLN 20x, N.A.0.50, W.D.=1.96mm	○	○	○	○
	U PLAN FLN 40x, N.A.0.75, W.D.=0.78mm	○	○	○	○
	U PLAN FLN 100x(Oil), N.A.1.30, W.D.=0.15mm	○	○	○	○
Working Stage	<b>Rack less</b> (Integrated) Mechanical Stage, Size 182x140mm, Travel Range 77x52mm, Double Slide Holder	●	●	●	●
	Mechanical Stage Size 175 mmx145mm, Travel 76mmX52mm, Scale: 0.1mm, Double Slide Holder	○	○	○	○
Focusing	Coaxial Coarse & Fine Focusing, Coarse Focusing Travel Range: 22mm, Fine Focusing Div. 0.002mm	●	●	●	●
Condenser	Swing-out Condenser, N.A.0.9/0.13, Iris Diaphragm	●	●	●	●
Illumination	Transmit Light 6V30W Halogen Koehler Illumination, Wide Voltage 100V~240V, Field Diaphragm	●	●	●	●
Field Diaphragm	For Kohler Illumination	●	●	●	●
Filter	Dia.45mm, Blue	●	●	●	●
	Dia.45mm, Green	○	○	○	○
	Dia.45mm, Yellow	○	○	○	○
Dark Field	Dark Field Condenser, Dry, N.A.0.83-0.91, For 4x10x40x Objective	○	○	○	○
	Dark Field Condenser, Immersion, N.A.1.3, For 100x Objective				
Polarizing	Analyzer + Polarizer Set	○	○	○	○
Phase Contrast	Infinity Plan Phase Contrast Objective 10x + Phase Contrast Slide 10x + Phase Contrast Condenser + Telescope 11x + Green Filter	○	○	○	○
	Infinity Plan Phase Contrast Objective 20x + Phase Contrast Slide 20x + Phase Contrast Condenser + Telescope 11x + Green Filter	○	○	○	○
	Infinity Plan Phase Contrast Objective 40x + Phase Contrast Slide 40x + Phase Contrast Condenser + Telescope 11x + Green Filter	○	○	○	○
	Infinity Plan Phase Contrast Objective 100x + Phase Contrast Slide 100x + Phase Contrast Condenser + Telescope 11x + Green Filter	○	○	○	○
	Turret Phase Contrast Attachment Infinity Plan Phase Contrast Objective 10x20x40x100x, Turret Phase Contrast Condenser 5-Holes, Telescope 11x, Green Filter	○	○	○	○
Fluorescence	<b>Upgrade From Biological Microscope With B, G</b> Chroma Fluorescent Set 6 Holes Disc Fluorescent Unit 5W LED Lamp House 5W LED Power Box Ultraviolet Protection Barrier	●	●		
	<b>Upgrade From Biological Microscope With B, G, U, UV</b> Chroma Fluorescent Set 6 Holes Disc Fluorescent Unit 5W LED Lamp House 5W LED Power Box Ultraviolet Protection Barrier			●	●
Adapter	C-Mount 0.5x, Focus Adjustable	○	○	○	○
	C-Mount 0.75x, Focus Adjustable	○	○	○	○
	C-Mount 1.0x, Focus Adjustable	○	○	○	○
	Digital Eyepiece Camera Adapter, Dia. 23.2mm/25mm	○	○	○	○
Package	Carton Size 990x340x440mm, 1 pc / Ctn				
Weight	Gross Weight: 23 kgs, Net Weight: 18 kgs				

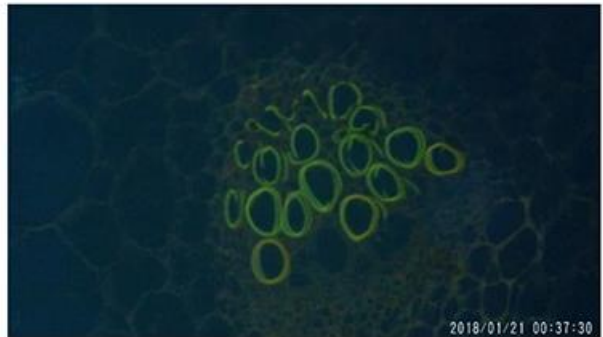
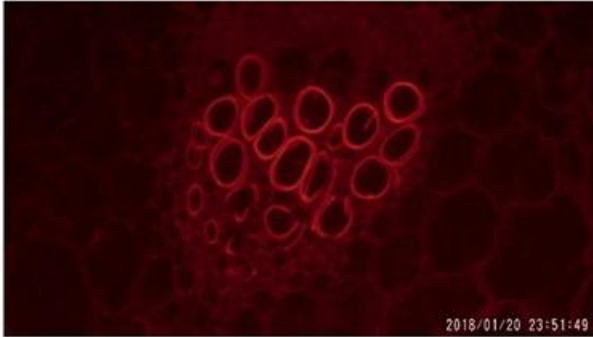
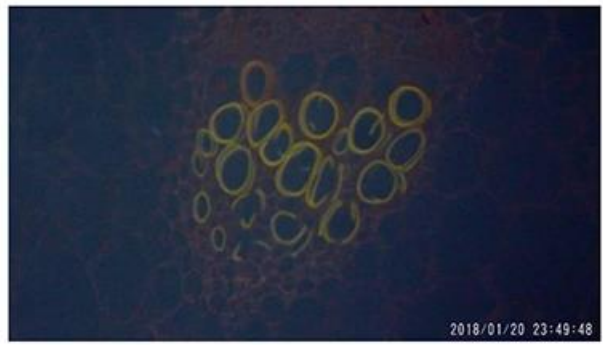
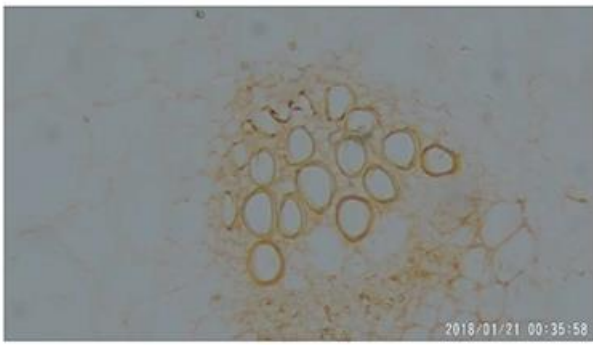
Note: "●" in Table Is Standard outfits, "○" is Optional Accessories

## Fluorescent Filters





Fluorescent Filters	Exciter (nm)	Dichroic (nm)	Emitter (nm)
UV	330-380	400	435
V	380-420	430	460
B	420-490	505	520
G	500-550	575	590



## Product Accessories



Infinity Plan Semi-APO Fluorescent Objective



Mechanical Stage Size  
175 mm × 145 mm



WF10X/20mm  
(High Eyepoint)



Dark Field  
Condenser, Dry



Dark Field  
Condenser, Immersion



ECO, Auto  
Power Off System





**Infinity Plan Objective**



**Digital Eyepiece Camera Adapter**



**-BK Analyzer + Polarizer Set**



**C-Mount 1.0x, Focus Adjustable**



**C-Mount 0.75x, Focus Adjustable**



**Simple Phase Contrast Attachment**



**C-Mount 0.5x, Focus Adjustable**



**Turret Phase Contrast Attachment**

